

Families Thrive

Building a Responsive System


families>>thrive 

The foundation of Families Thrive is a relational platform built on *strengths*.

- Bringing people together with a common purpose and interests
- Learning together
- Strengthening social capital
- Developing new capacities
- Leveraging best practices and creating next practices

Relationships are all there is. Everything in the universe only exists because it is in relationship to everything else. Nothing exists in isolation. We have to stop pretending we are individuals that can go it alone.
Margaret Wheatley

It began with a group of people...

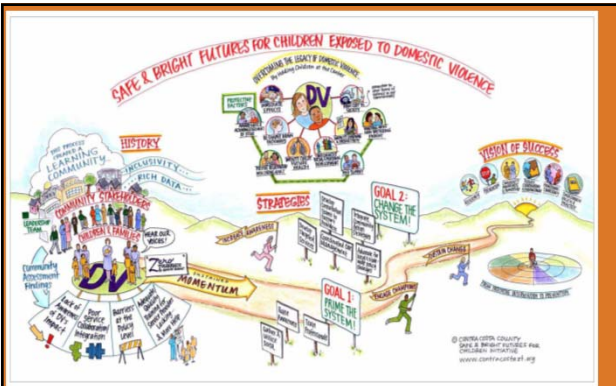


2005

who were concerned about the impact of domestic violence on children and youth

From these efforts, and lots of listening to youth and to the community.....

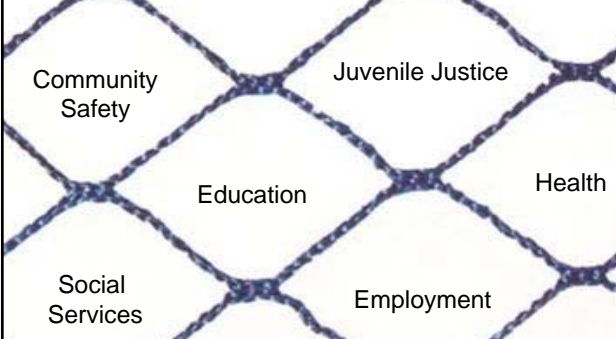




2007

We developed a vision for the future

We knew then that the issue was interconnected with many other issues....



....and we would need to engage multiple systems

So we put out an invitation.....

2009

to come together and to build upon our strengths to create a responsive system

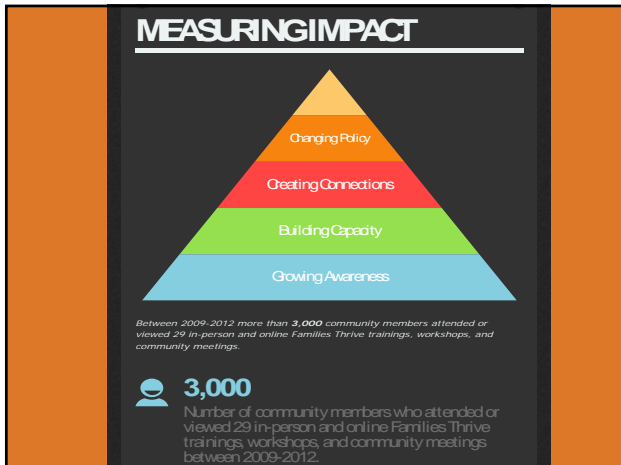
Key Themes

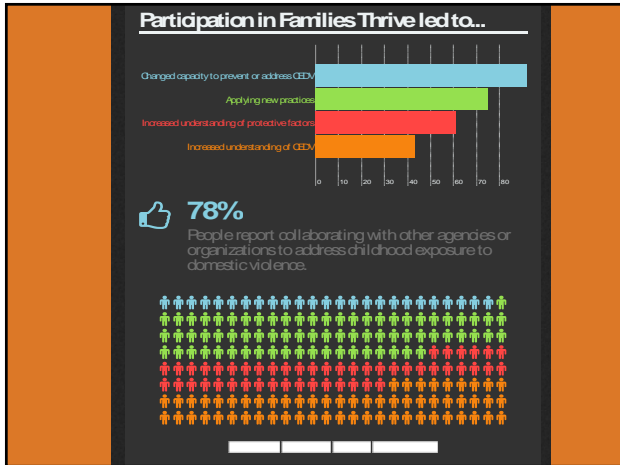
- 1. Knowledge and Learning**
We challenge and transform how we think about our work.
- 2. Organizational Practices**
We leverage our learning and embed effective practices and policies into our work.
- 3. Partnerships and Collaboration**
We transcend boundaries and create collaborative strategies focusing on prevention and early intervention.
- 4. Increasing Awareness**
We make this issue vital and relevant to the community.
- 5. Data and Evaluation**
We use data to influence and tell the story of community change.

and developed key themes to guide our collaborative work









Childhood Exposure to DV

What we are learning...

- >> Brain Science
- >> Adverse Childhood Experiences
- >> Trauma Informed Responses
- >> Building Collaboration
- >> Creating a Shared Framework
- >> Strengths-based Approaches and Resilience
- >> Thriving

Snapshot

Nonviolence >> Safety >> Integrity >> Compassion >> Collaboration >> Diversity >> Safety >> Choice >> Open Communication

Contra Costa Trauma Awareness & Resilience Leadership

In a Trauma Informed approach, all people at all levels of the organization or system have a foundational understanding of trauma and its effects on individuals, families, groups, organizations and communities.

Why Trauma Informed?
A trauma informed approach is critical because of the widespread impact of trauma. It is important to support healing and paths for recovery through the integration of knowledge of trauma into practice and policies based on values of collaboration and empowerment.

How will my organization benefit from being Trauma Informed?

- Create safety for staff and clients
- Promote self care and support healing
- Provide consistency with agencies' practices and policies
- Facilitate collaboration
- Empower clients

Together we will:

- Facilitate collaborative learning and support a common base of knowledge related to trauma
- Link practice to research and science
- Develop coordinated policy and practice recommendations
- Recognize and link existing strengths in our community

How we can help:

- Training and support
- Development of a Trauma Informed Care Toolkit
- Work groups
- Quarterly meetings

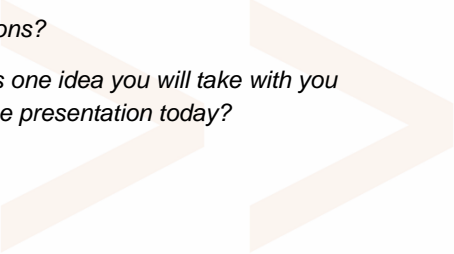
Join Us:

Contact Us: Kathryn Burroughs >> Kathryn@familythrives.org >> (925) 313-1791

Discussion

Questions?

What is one idea you will take with you from the presentation today?



Contact Us

Devorah Levine, JD
dlevine@ehsd.ccounty.us
(925) 313-1524

Kathryn Burroughs
kathryn@famielsthrive.org
(925) 313-1791

www.famielsthrive.org

