

2015 National Conference on Health and Domestic Violence



Magee-Womens Hospital

of University of Pittsburgh Medical Center

“The Evolution of a Hospital-based Intimate Partner Violence (IPV) Task Force Into an Inter-professional Collaborative Practice for Educating and Engaging Providers”

Presenters

Ebony Hughes, RN

Community Health Educator (Retired)
Magee-Womens Hospital of UPMC

Janice Goldsborough, MS

Medical Advocacy Supervisor
Women's Center and Shelter of Greater Pittsburgh

Technical Assistance

Roxanne E. Epperson

Executive Director/Founder
Women Against Abusive Relationships (WAAR)

Intimate Partner Violence (IPV)

Intimate Partner Violence (IPV) is a major public health problem affecting millions every year, and bringing with it a myriad of negative physical, psychological, social, health and economic consequences.



Education is a key component in ending IPV in our community. Being aware of the realities and the myths surrounding IPV helps to decrease acceptance of abuse in society and provides people with the tools to identify and address this problem.

History

1. Magee-Womens Hospital of UPMC is:
 - 380-bed acute care teaching hospital;
 - one of the Nation's top five hospitals for Gynecological Care (US News and World Report);
 - one of the six original Centers of Excellence in Women's Health by the Office of Women's Health of the Department Human Services; and
 - has more than 11,000 births annually.
2. The Domestic Violence Task Force, as it was originally named, was started in the 90s, because IPV was recognized as a health issue with patients.
3. The Joint Commission for Accreditation of Healthcare Organizations (JCAHO); the American College of Obstetrics and Gynecology (ACOG); the Family Violence Prevention Fund (FVPPF); and other organizations were recommending IPV screening, response, and staff education policies.

History (Continued)

1. The first members were social workers, nurses, and administrator of the Emergency Department and Outpatient clinic.
2. The first education programs were meant to raise awareness among emergency room staff. It then expanded to include the entire facility. Education included patient assessments, intervention and referral resources.
3. As knowledge of IPV grew, the inclusion of community-based education was recognized as essential.

Mission

The mission of Magee-Womens Hospital of UPMC's Intimate Partner Violence Task Force is *“to raise IPV awareness through education within the medical community and the greater community-at-large.”*



2014

IPV Task Force Results

In 2014 the IPV Task Force educated

- a) Over 300 community members
 - At-risk Women
 - High school students
 - Information Tables
 - Young parents

- b) Over 250 health/service providers
 - Nursing Assistants
 - Nurse Practitioners and Nurses
 - Social Workers
 - Students

Task Force Structure

- ▶ The task force is comprised of staff members; i.e., nurses, social workers and outreach workers within the hospital; representatives of community agencies; academia; law enforcement; and the Employee Assistance program.
- ▶ Activities and Responsibilities of Membership
 - Attend monthly meetings.
 - Keep abreast of changes and progress in IPV.
 - Discuss IPV issues within the community.
 - Use professional networks and knowledge to bring current information back to the group.
 - Suggest topics and speakers for annual Community and Professional Education Forum.
 - Develop patient and community education materials.

Agency Collaborations

- ▶ Allegheny County District Attorney's Office
- ▶ Carlow University/Greibel Collaborative
- ▶ Center for Victims of Violence and Crime
- ▶ Chatham University
- ▶ **Crisis Center North**
- ▶ Employment Assistance Programs (EAP)
- ▶ Moving Towards Non-Violence
- ▶ Pittsburgh Action Against Rape (PAAR)
- ▶ Point Park University Playhouse
- ▶ **University of Pittsburgh**
- ▶ **Women Against Abusive Relationships (WAAR)**
- ▶ **Women's Center & Shelter of Greater Pittsburgh (WC&S)**
- ▶ WomensPlace



Benefits of Collaborations

“Unity is Strength...when there is teamwork and collaboration, wonderful things can be achieved.”

Mattie J. T. Stepanek

- Sharing resources
- Multiple experiences/disciplines
- Shared costs (in-kind or cash)
- Multi-factorial perspectives on IPV
- Promote cooperation vs. competition by breaking down silos
- Mutual support of members in a safe environment

Barriers

Buy-in from administration for projects, such as;

~ Electronic PFA~

Members come and go.

Projects & Activities – Professional

- ▶ New Employee Orientation
- ▶ Agency Staff Trainings
- ▶ Hospital Lunch & Learns
- ▶ IPV Information Table in Lobby of Magee-Womens Hospital
- ▶ Annual Community and Professional Education Forum

Projects & Activities – Community

- ▶ Annual October IPV Community Event
- ▶ Intimate Partner Violence in the Community at-large, i.e. Pittsburgh Public Schools, Health Fairs, etc.
- ▶ Moms & Cops Community Training
- ▶ Silent Witness Silhouette Exhibit in Hospital Lobby
- ▶ Pregnancy & Violence Prevention Interdisciplinary Advisory Board
(University of Pittsburgh Center for Minority Health and the Allegheny County Health Department)
- ▶ Women Against Abusive Relationships (WAAR) – Healing Space
- ▶ Project Connect – A violence prevention-and-response initiative
(Woodland Hills School District)



Sample Event Fliers



Magee-Womens Hospital *of University of Pittsburgh Medical Center*

Office Reference Manual *for* Recognition and Referral *of* Victims of Domestic Violence



Magee-Womens Hospital
of UPMC Health System
A publication of
The Domestic Violence Resource Center
Supported by a grant from
The Giant Eagle Foundation

Magee-Womens Hospital of University of Pittsburgh Medical Center

Register Now!

Stalking Goes High Tech: A Response to Technological Abuse in Intimate Partner Violence Relationships



Presenter: Lois D. Fasnacht,
Pa. Coalition Against Domestic Violence

September 21, 2011
5:00 to 7:30 p.m.

Magee-Womens Hospital
of UPMC - Auditorium



Magee Womens Hospital of UPMC
Women's Center & Shelter of Pittsburgh
Crisis Center North
Alle Kiske Area Hope Center

Continuing Education Credit: Nurses 2.5 Social Workers 2.5

This continuing nursing education activity has been approved for 2.5 contact hours by the UPMC Provider Unit of the PA State Nurses Association, an accredited approver by the American Nurses Credentialing Center's Commission on Accreditation. To receive contact hours, the participant must attend the entire session and complete the evaluation form.

No Cost—Reduced Parking—Refreshments 4:30-5pm

For Information call 412-687-8017 ext: 351

To register call 412-802-8299

Intimate Partner Violence, Reproductive Coercion, and Unintended Pregnancy: Rethinking Pregnancy Coercion

October 24th, 2012

Magee Women's Hospital of UPMC, Auditorium

5:00 - 5:30 pm

Registration and Light Dinner Fare

5:30 - 6:45 pm

Forum/Presentation: Elizabeth Miller, MD (Q&A Following Presenter)

6:45 - 7:30 pm

Forum/Presentation: Eleanor Schwarz, MD (Q&A Following Presenter)

About the Speakers:

Dr. Elizabeth Miller is Chief of Adolescent Medicine at Children's Hospital Pittsburgh, the University of Pittsburgh Medical Center. Trained in medical anthropology as well as Internal Medicine and Pediatrics, Dr. Miller's research has included examination of sex trafficking among adolescents in Asia, teen dating abuse, and reproductive health, with a focus on underserved youth populations including pregnant and parenting teens, foster, homeless, and gang-affiliated youth. She is Chair of the Evaluation and Quality Panel of the National Assembly of School Based Health Care, Co-chair of the Violence Prevention Sub-Committee of the Society for Adolescent Health and Medicine, and Co-chair of Advocacy Training for the Academic Pediatric Association. Her current research (funded by the National Institute of Health and National Institute of Justice) has allowed her to partner with community health clinics, focusing on the impact of gender-based violence on young women's reproductive health. Her work on reproductive coercion and birth control sabotage was recently featured in the New York Times, and she was also on the Oprah Winfrey show as a national expert on teen dating violence. She is also involved in projects to reduce gender based violence and improve women's health in India, Japan, and Kenya.

Dr. Eleanor Schwarz is currently the Women's Health Research Unit Director of the Division of Internal Medicine and Associate Professor of Medicine, Epidemiology, Obstetrics, Gynecology and Reproductive Sciences at the University of Pittsburgh. She serves as a fellow of the Society of Family Planning and has authored chapters for the authoritative text, *Contraceptive Technology*. Additionally, Dr. Schwarz holds the position of Senior Medical Expert in Reproductive Health for the US Department of Veterans Affairs, Associate Editor of Journal Watch Women's Health, and is a member of the FDA's Advisory Committee on Reproductive Health Drugs. Dr. Schwarz was the past-chair of the Society of General Internal Medicine's Taskforce on Women's Health.

This event is sponsored by:

Magee Women's Hospital of UPMC
Women's Center and Shelter of Greater Pittsburgh
Crisis Center North



UPMC LIFE
CHANGING
MEDICINE

Magee-Womens Hospital of University of Pittsburgh Medical Center

Register Now!

Annual Community and Professional Intimate Partner Violence Seminar

**Topic: “Setback is Part of the Journey”
Harm Reduction as a Tool in IPV Interventions**

Presenters:

Dana Davis, MSW, PhD, Founder – The Open Door Inc.

Judy Chang, MD, MPH, Faculty-Researcher – Magee-Womens Hospital of UPMC

October 10, 2013 5:00pm-7:30pm

Magee-Womens Hospital of UPMC - Auditorium

Sponsors:

Magee-Womens Hospital of UPMC

Women’s Center and Shelter of Pittsburgh

Crisis Center North

.....
2 Contact Hours for Nurses

2 Contact Hours for Social Workers with \$10 Fee

This continuing nursing education activity has been approved for up to 2.0 contact hours by the UPMC Provider Unit of the PA State Nurses Association, an accredited approver by the American Nurses Credentialing Center’s Commission on Accreditation.

To receive contact hours, the participant must attend the entire session and complete the evaluation form.

This program is offered for 2 hours of social work continuing education through co-sponsorship of the University of Pittsburgh’s School of Social Work, a Council on Social Work Education accredited school and, therefore, a PA pre-approved provider of social continuing education. These credit hours satisfy requirements for LSW/LCSW, LPC and LMFT biennial license renewal. For information on social work continuing education call (412) 624-3711.

Reduced Parking – Refreshments 5:00-5:30pm

For Information call 412-641-1472 To Register go to the website: classes.upmc.com

Register Now!

Annual Community and Professional Intimate Partner Violence Seminar

“Clinical Applications of Trauma Informed Care”

Presenter:

Walter Howard Smith, Jr. PhD, Allegheny County Dept. of Human Services,

DHS Clinical Director, Deputy Director of Children, Youth & Family

October 27, 2014 5:00pm-7:30pm

Magee-Womens Hospital of UPMC

Conference Room 2131

Sponsors:

Magee-Womens Hospital of UPMC

Women’s Center and Shelter of Pittsburgh

Crisis Center North

University of Pittsburgh School of Nursing

.....
2 Contact Hours for Nurses

2 Contact Hours for Social Workers with \$10 Fee

This continuing nursing education activity has been approved for up to 2.0 contact hours by the UPMC Provider Unit of the PA State Nurses Association, an accredited approver by the American Nurses Credentialing Center’s Commission on Accreditation.

To receive contact hours, the participant must attend the entire session and complete the evaluation form.

This program is offered for 2 hours of social work continuing education through co-sponsorship of the University of Pittsburgh’s School of Social Work, a Council on Social Work Education accredited school and, therefore, a PA pre-approved provider of social continuing education. These credit hours satisfy requirements for LSW/LCSW, LPC and LMFT biennial license renewal. For information on social work continuing education call (412) 624-3711.

Reduced Parking – Refreshments 5:00-5:30pm

For Information call 412-641-1472 Register at: www.classes.upmc.com/events/magee

UPMC LIFE
CHANGING
MEDICINE

Magee-Womens Hospital of University of Pittsburgh Medical Center

Join us and bring someone you care about!

Telling Secrets: SILENT NO MORE

Intimate partner violence (IPV) places families in a harmful cycle that, without help, is very difficult to break. Without intervention, IPV becomes the relationship model for each new generation. Education, communication, and support are our best defenses for prevention.

What: An Interactive Play

Admission is FREE and includes light refreshments

Where: Pittsburgh Playhouse of Point Park University

Located at 222 Craft Avenue in Oakland

FREE parking is available in the Magee lot across the street

When: Tuesday, October 12, 5 to 8 p.m.

Why: Because **ANYONE** can be hurt by an intimate partner!

Every nine seconds, a woman is beaten by an intimate partner in the United States.

Each year, 3.3 to 10 million children are exposed to intimate partner violence.

In homes where intimate partner violence exists, there is a 50-percent chance that child abuse also exists.

Adolescents are at the highest risk for relationship violence.

Boys who are exposed to violence in the home are more likely to become abusive in their own relationships.

A joint effort of Magee-Womens Hospital of University of Pittsburgh Medical Center's Domestic Violence Task Force, the legendary Pittsburgh Playhouse of Point Park University, The Center for Victims of Violence and Crime, Womanspace, Pittsburgh Action Against Rape, Women's Center and Shelter of Greater Pittsburgh, YMCA of Greater Pittsburgh, and the Silent Witness Initiative of The National Council of Jewish Women.

To register, call Magee-Womens Hospital's Education Department at **412-641-4492**
For more information, contact **Ebony Hughes** at **412-641-1472** or **Kelley Shell** at **412-641-2276**



UPMC LIFE
CHANGING
MEDICINE

Magee-Womens Hospital of University of Pittsburgh Medical Center

The Domestic Violence Task Force
of Magee-Womens Hospital
of University of Pittsburgh Medical Center
Presents

Hidden Hurts

A **FREE** interactive play about
intimate partner violence



Share this evening with someone you care about

Monday, Oct. 17, 2005

6 to 8 p.m.

Pittsburgh Playhouse of Point Park University
Craft Avenue, Oakland



Magee-Womens Hospital
of University of Pittsburgh Medical Center

About Intimate Partner Violence

Although it is primarily a crime against women, intimate partner violence (IPV) can place anyone in a harmful cycle that is very difficult to break. Compared to women without disabilities, research suggests that IPV is just as if not more prevalent among women with disabilities. Without intervention, IPV becomes the relationship model for each new generation. Education, communication, and support are our best defenses.

The Facts

- Every nine seconds, a woman is beaten by an intimate partner in the United States.
- Women with disabilities suffer from additional types of abuse, for longer periods of time, and at the hands of more abusers, when compared to women without disabilities.
- In homes where IPV exists, there is a 50 percent chance that child abuse also exists.
- Approximately 3.3 to 10 million children in the United States are exposed to IPV each year.
- Adolescents are at the highest risk for relationship violence.



About the Program

"Hidden Hurts" is an original play by Mildred Jenkins, a crime scene investigator with the City of Pittsburgh Police who has become an advocate for breaking the cycle of intimate partner violence. Her work sheds light on the realities faced by victims of intimate partner violence, including particular challenges for women with disabilities.

Join Us

Refreshments and parking are provided. To register, call Magee-Womens Hospital's Education Department at **412-641-4492**.

For more information about the program, contact Ebony Hughes at **412-641-1472** or ehughes@mail.magee.edu.

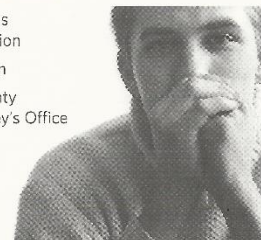


The facility is wheelchair-accessible, and the event will be interpreted for the hearing impaired. If you have any special needs, please notify Magee's Education Department when you call to register so that we can accommodate your needs.

This program is a joint effort of Magee-Womens Hospital of University of Pittsburgh Medical Center's Domestic Violence Task Force and the Pittsburgh Playhouse of Point Park University.

This project has been made possible through generous support from:

Magee-Womens
Health Foundation
FISA Foundation
Allegheny County
District Attorney's Office



Magee-Womens Hospital of University of Pittsburgh Medical Center



Moms & Cops

FOCUSING ON FAMILIES

Saturday, May 18, 2013

Northview Heights Community Gym • 522 Mt. Pleasant Road
Pittsburgh, PA 15212



Sponsored by

Moms and Cops Collaborative - Northview Heights Citizen's Council,
Housing Authority City of Pittsburgh and the Somali Bantu Community Association

Moms and Cops Collaborative

Allegheny County Department of Human Services, Office of Children Youth and Families - Allegheny County Department of Human Services, Office of Children, Youth and Families - Allegheny County Health Dept. Allegheny County Office of the District Attorney - Birmingham Foundation - Center for Traumatic Stress Center for Victims of Violence and Crime - Children's Hospital of UPMC - City of Pittsburgh Bureau of Police City of Pittsburgh, Office of the Mayor, Weed & Seed Program - Hill District Community Collaborative - Housing Authority City of Pittsburgh - Magee-Women's Hospital of UPMC - PA Department of Health - Pittsburgh Action Against Rape - Project Safe Neighborhoods - University of Pittsburgh Medical Center - SIDS of PA - Western Psychiatric Institute & Clinic of UPMC - Women's Center & Shelter of Greater Pittsburgh

UPMC LIFE
CHANGING
MEDICINE

Staff Lunch & Learns

Please join us for a Lunch n' Learn:

“The Dynamics of Spousal Abuse from the Abuser’s Perspective”

Presented by David Russell, M.Ed.

Director of the Moving Toward Nonviolence Program

12pm – 1pm

Wednesday – February 22, 2006

Conference Rooms A and B on Zero Level

Lunch will be provided on a first-come, first-served basis and no registration is required.

Please contact Kelley Shell at 412-641-2276 if you have any questions.

This program is sponsored by the Domestic Violence Task Force at Magee-Womens Hospital and Digene Corporation

Staff Lunch & Learns

You're invited to Lunch n' Learn!

"When Survivors of Sexual Abuse Give Birth..."

Presented by

Kathy McGrath, MSW, LSW, FCCE, CD DONA

Wednesday, June 22nd

Clinic Staff Classroom, Zero Level

12 - 1pm

No registration required

Lunch provided by Merck

Sponsored by the Magee Domestic Violence Task Force

Staff Lunch & Learns

Please join us for a

Lunch n' Learn:

"Helping Patients, Co-workers and Families Stay Safe.

*The PFA (Protection From Abuse order)
Does It Work?"*

Presenters:

Attorney David Spurgeon – Allegheny County District Attorney's Office

Joanne Witkowski – Womansplace

12pm – 1pm

Friday, August 25, 2006

Conference Room 2131

*Magee-Womens Hospital
of University of Pittsburgh Medical Center*

*Brown Bag Lunch – Drinks will be provided on first-come first-served basis and
No Registration Required*

Please contact Ebony Hughes at 412-641-1472 if you have any questions.

This program is sponsored by the Domestic Violence Task Force at Magee-Womens Hospital

Funding Sources (Past)

- ▶ Allegheny County District Attorney's Office
- ▶ Bristol-Meyers Pharmaceuticals
- ▶ FISA Foundation
- ▶ Giant Eagle Foundation
- ▶ Magee-Womens Foundation
- ▶ Merck Pharmaceuticals
- ▶ Mon Valley Provider's Council
- ▶ National Council of Jewish Women – Pittsburgh Section
- ▶ Office of Women's Health

In-Kind Contributions

- ▶ Magee-Womens Hospital of UPMC (Space & Reduced Parking Rate)
- ▶ Speakers
- ▶ Pittsburgh Playhouse @ Point Park University (Space)

Program Feedback

Stalking Goes High Tech

“...excellent program for any healthcare provider.”

“...I was not aware of how technology could be used.”

Trauma Informed Care

“...excellent information that was new for me as a nurse.”

“Can we have access to PowerPoint?”

Hidden Hurts

“Shows abuse can happen to anyone.”

“It helped me to think about abuse of the physically disabled.”

Silent No More

“I like the fact that there were counselors available to meet the needs of attendees... I enjoyed the song at the end. I thought it was appropriate and uplifting.”

“The speakers telling their stories... to see that they survive and become successful.”

“Teamwork divides the tasks and
doubles the success.” --Anonymous

Thank you!

Contact Information

Veta Farmer, MSW

Medical Social Worker

Magee-Womens Hospital Outpatient Clinic

300 Halket Street

Pittsburgh, PA 15213

farmvr@mail.magee.edu