

# Integrating domestic violence screening and best practices into family support programming in Iowa

PJ West  
Iowa Department of Public Health  
MIECHV Program Manager



# Where is Iowa?



# OVERVIEW OF IOWA'S PROCESS

---



- **IOWA'S TRAINING**
- **DOMESTIC VIOLENCE SCREENING PROTOCOL**
- **DOCUMENTATION**
- **CONTINUED QUALITY IMPROVEMENT (CQI)**





# Training for Family Support Staff

---

- Core Trainers
- Training Team
- Quarterly meetings/TA
- Follow up survey to training participants





# Iowa's Family Support Domestic Violence Screening Protocol

- Purpose
- Background
- Scope
- Qualifications
- Policy
- Definitions
- Responsibilities
- Procedures
- Training & Screening Tools





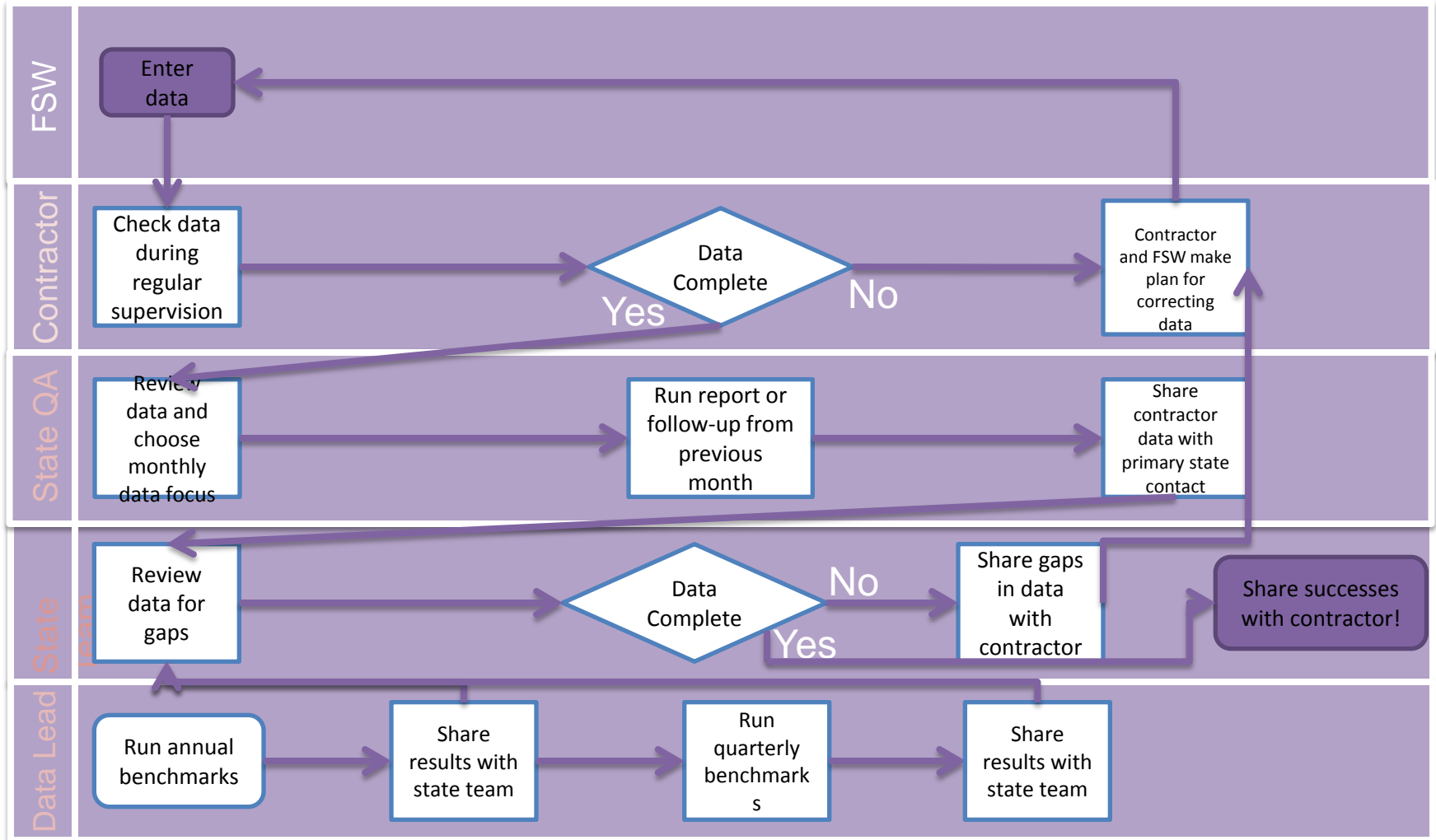
# Iowa's Continued Quality Improvement

---

- **Process mapping**
- **Problems identified**
- **Solutions**
- **DV Screening Report**
- **Monthly MIECHV Contractors Calls**



# MIECHV Data Quality Check Process Map





# Information and Resources

---

- **IDPH Family Support website**  
[http://www.idph.state.ia.us/hpcdp/family\\_health\\_support.asp](http://www.idph.state.ia.us/hpcdp/family_health_support.asp)
- **Futures without Violence website**  
<http://www.futureswithoutviolence.org/>
- **Early Childhood Iowa website**  
<http://www.earlychildhoodiowa.org/>
- **Iowa Fun Facts**  
<http://www.movoto.com/blog/opinions/iowa-facts/>







# Questions?

---



## For More Information?

### Contact:

PJ West

*State Home Visitation Program Manager*

*Iowa Department of Public Health – Bureau of Family Health*

[PJ.West@idph.iowa.gov](mailto:PJ.West@idph.iowa.gov)

Phone: 515-229-9976

