

THE HEALTH IMPACT OF DOMESTIC & SEXUAL VIOLENCE

ON ADULT AND CHILD HEALTH

Objectives

- Identify the short and long term health consequences of domestic and sexual violence on child health
- Identify the short and long term health consequences of domestic and sexual violence on adult health

MENTAL HEALTH ISSUES



- Intimate Partner Violence

ALCOHOL ABUSE

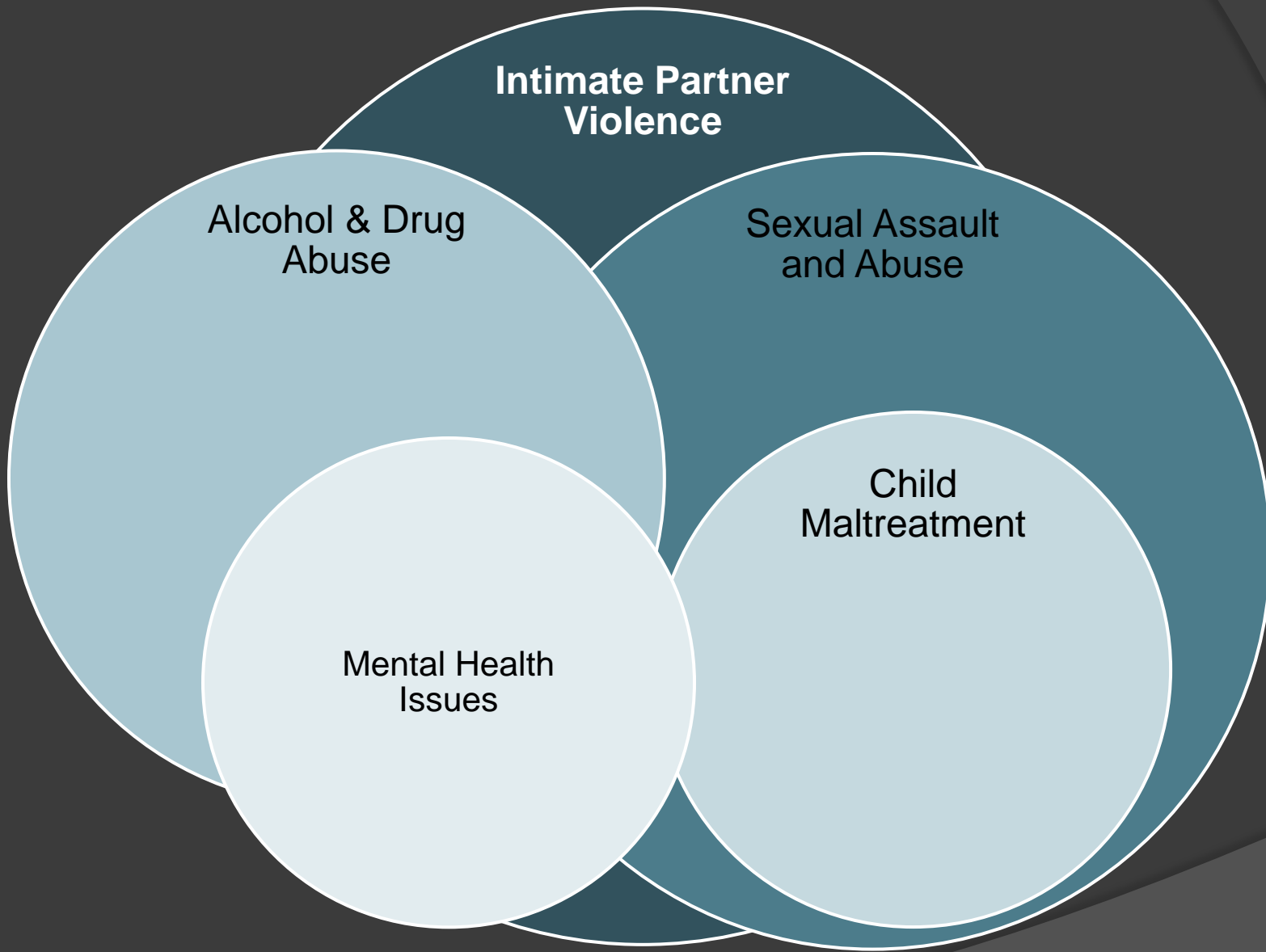


- Sexual Assault and Abuse

DRUG ABUSE



- Child Abuse and Neglect



**Intimate Partner
Violence**

**Alcohol & Drug
Abuse**

**Sexual Assault
and Abuse**

**Child
Maltreatment**

**Mental Health
Issues**

Mom brings 6yo Andrea in to see you saying the medicine given to her in the ER 2 nights ago does not seem to be working. In review of her record you see that Andrea was transferred by ambulance from home 2 nights ago with difficulty breathing and treated with nebulizers for new onset asthma. She was sent home with an inhaler and patient/family education on its use.

26% of parents who brought non-emergent children to the pediatric ED disclosed current IPV

CHILDREN

- Post-traumatic stress disorder
 - bed-wetting
 - nightmares,
 - Allergies,
 - Asthma,
 - Gastrointestinal problems,
 - Headaches
 - Aggressive behavior
 - Anxiety
 - Depression
 - Hyperactive behavior
 - Violence toward peers
 - **Suicide attempts**
 - **Drug and alcohol** abuse, **running away** from home,
 - Engage in teenage prostitution
 - Commit sexual assault crimes
 - Suffer some form of child maltreatment at the hands of the batterer
 - Adolescent victims of dating violence
- Adult:
 - tobacco use,
 - substance abuse,
 - **obesity**,
 - cancer,
 - heart disease,
 - depression
 - unintended pregnancy.
 - The U.S. Advisory Board on Child Abuse and Neglect suggests that domestic violence may be **the single major precursor to child abuse and neglect fatalities** in this country
 - Physical abuse during childhood increases the risk of future victimization among women and the risk of future perpetration of abuse by men more than two-fold.

67 yo Virginia is being seen by you in the ER after an apparent TIA. She was started on Lipitor by you 12 weeks ago, but this has had little to no effect on lowering her cholesterol.

ADULTS

- ◎ **Injuries** sustained during violent episodes
 - Brain and spinal cord
 - Strangulation
 - Broken bones
 - Facial injuries
- ◎ Of all female **homicide** victims, a significant portion are killed by an intimate partner
- ◎ Arthritis
- ◎ Asthma
- ◎ Headaches and migraines
- Back pain
- **Chronic pain syndromes**
- High blood cholesterol
- Heart attack and heart disease
- Stroke
- Depressed immune function

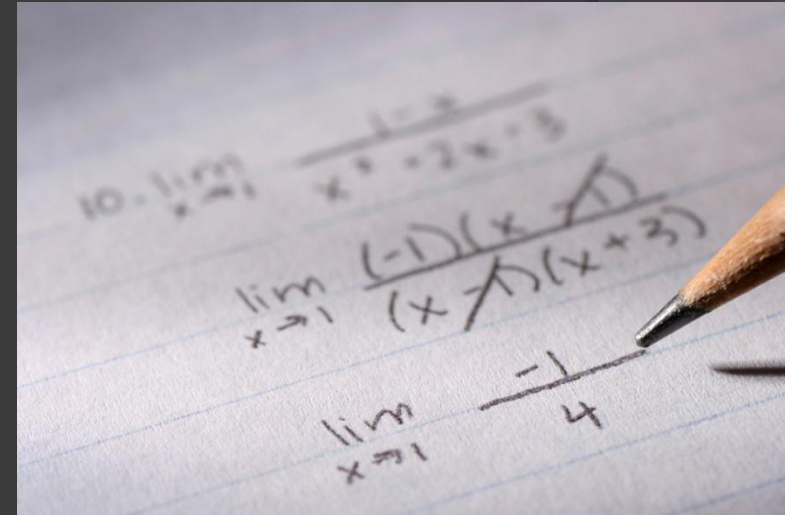
35 yo Debra is being seen by you for the third time in 8 weeks for pelvic pain. You have found nothing on ultrasound or CT, her CBC is within normal limits as is her urinalysis and you are considering laproscopic surgery.

ADULTS

- Gastrointestinal complaints
 - Stomach ulcers
 - Frequent indigestion, diarrhea, or constipation
 - **Irritable bowel syndrome**
 - Spastic colon
- Gynecologic complaints
 - **sexually transmitted diseases**
 - vaginal infections
 - painful intercourse
 - pelvic pain
 - **PID**
 - **Chronic pelvic pain syndromes**
 - urinary tract infections
 - abdominal pain
 - dysmenorrhea
 - vaginitis
 - Pre-invasive cervical neoplasia
 - invasive cervical cancer
 - **HIV**

IPSV as part of the equation

- Chronic headaches
- Depression
- Pelvic inflammatory disease
- Vaginal and anal tearing
- Bladder infections
- Sexual dysfunction
- Pelvic pain
- Gynecological problems
- **Women who were physically and sexually abused reported the most health problems**



15 yo Alicia is being seen with vaginal bleeding 12 weeks into her pregnancy.

Pregnancy

- Unintended pregnancies
- Teen pregnancies
- Rapid repeat pregnancies in teens
- Abortions
- Repeat abortions

- Abuse is more common for pregnant women than gestational diabetes or preeclampsia

- **Homicide is a leading cause** of traumatic death for pregnant and postpartum women in the United States, accounting for 31 % of maternal injury deaths.

- 40% of pregnant women who have been exposed to abuse report that their **pregnancy was unintended**, compared to just 8% of non-abused women.

36 yo Lynn presents asking to be put on Zoloft because she feels depressed. You can smell alcohol on her breath during the visit.

Mental Health

- ⦿ Anxiety
- ⦿ Sleep problems
- ⦿ Memory loss
- ⦿ Post-traumatic stress disorder
- ⦿ **Depression**
- ⦿ Post partum depression
- ⦿ Panic attacks, insomnia
- ⦿ **Substance abuse**
- ⦿ **Suicide ideation/actions**



Cost

Women with medical-record documented IPV were compared to women who had no documentation of IPV in their medical records. Women with a history of IPV demonstrated a pattern of higher health care utilization and costs across all levels of care and types of diagnoses. The mean cost for a DV patient was \$5131 compared to \$3409 for non-IPV women (and \$2343 for all enrolled women).

MENU

SELECT FROM THE TOPICS BELOW >>

Overview

IPV and Sexually Transmitted Infections/HIV

Regional and Local Data

IPV and Perinatal Programs

Medical Cost Burden and Health Care Utilization for IPV

IPV, Breastfeeding, and Nutritional Supplement Programs

The Impact of IPV on Women's Health

IPV and Child and Adolescent Health

IPV and Behavioral Health

ACE Study: Leading Determinants of Health

IPV and Family Planning, Birth Control Sabotage, Pregnancy Pressure, and Unintended Pregnancy

IPV and Injury Prevention

Family Violence
Prevention Fund

Linda Chamberlain, PhD MPH

http://www.futureswithoutviolence.org/section/our_work/health/making_connection

BIBLIOGRAPHY

Questions