

# Seattle Children's Identifying DV in a Pediatric Emergency Room

## Why Screen?

- Gives more opportunity to disclose
- High association between child abuse and Intimate Partner Violence (IPV)
- Sends message to families that violence is a health concern; providers' care
- Early detection offers intervention options

## Screening Question

## Response To Question

Room	PA	BcAcISOLOS	Name	A/S	Cas Safe	Reason for Visit	ATT
Pre-arri							
WaitMe		05:15	EIGHTEEN, MOORE	18 y.		testing	
WaitMz		05:15	MOORE, MCTEAGUE	18 y.	No*	testing	MT
WaitMz		04:15	DOODLEBRAIN, EIG	19 y.	Yes*	test	
WaitBa							

## Discharge referrals

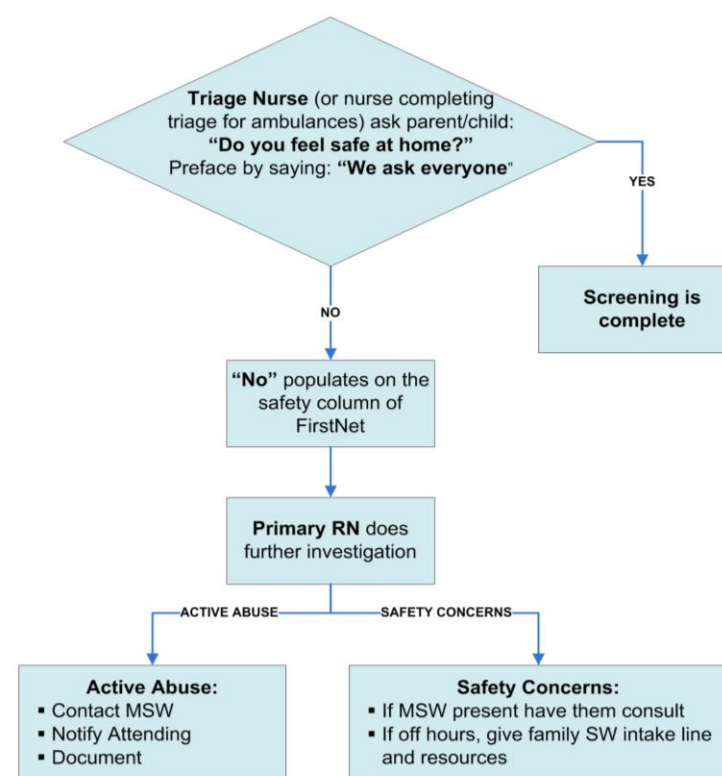
**Important Phone Numbers**  
 If you have questions immediately after your ED visit please call the ED Nurse Communication Specialist at 206.987.8899 or toll free at 1.866.987.8899

For other questions call:  
 Children's Hospital Main Line: 206-987-2000 (or visit <http://www.seattlechildrens.org> for more information)  
 Poison Control: 1-800-222-1222 (or visit <http://www.1-800-222-1222.info> for more information)  
**Social Work Intake Line: 206-987-2760 (Monday through Friday, 8:30am to 5pm)**

Toll-free Family Phone Interpreting Line: 1-866-583-1527  
 Call Children's Hospital in your own language. Not for medical emergencies.



## Home Safety Process in the ED



## Challenge

- Lack of privacy
- Abuser may be present
- Child's presence, especially if older than 3

## Project recommendations

- Improve privacy for family during screening question
- Change screening question to: "Do you feel safe in your current relationship?"
- Consider asking adding an additional screening question: "Is there a partner from a previous relationship who is making you feel unsafe now?"

## Overall Medical Center Data

Feb 2011 to Jan 2012	
Number of DV incidents reported on the PFRA form	52
Number of DV incidents reported on CASPERs	97
Number of CPS reports from the entire medical center	837

Overall ED Data	Feb. 2011- Jan. 2010
Total ER Visits	36,200
Total CPS Reports (includes all child abuse and neglect concerns, not only IPV related)	478

Data for Positive Safety Screening	Feb. 2011- Jan. 2010
Behavioral Health	70% / 558
Physical Symptoms (reason for ER visit)	23% / 158
Child Abuse Related (IDC, CPS, NAT)	6% / 51
IPV Involved	1% / 11

Screening Responses	Feb. 2011- Jan. 2010
Medical Social Work referred	49
CPS Involved	46
LE Involved	25
DV Advocate referred	1