



Best Practices for Farm Workers, Migrants and Immigrants Survivors of DV

Lucy V. Ortiz, LCSW
Immokalee Outreach Manager



Presentation Outline

- Goals & objectives
- Farm worker survivor's case
- Farm worker culture
- Migrant sub-culture
- Factors for acculturation



Presentation Outline

- Immigrant influence
- Legal remedies for victims
- Barriers to domestic violence services
- Suggestions for shattering barriers
- Other ideas?
- Community Action Plan



Goals & Objectives

- Understand three fears related to calling law enforcement during incidents of domestic violence
- Learn two legal immigration remedies for undocumented survivors of domestic violence.



Goals & Objectives

- Learn three barriers to delivery of domestic violence services specifically assisting the migrant/farm worker and immigrant community
- Learn three methods of addressing barriers to services



Farm Worker Survivor's Case

- 26 year old Hispanic female with 4 children, ages 6, 5, 3, 1
- Spanish speaking only
- Married in Mexico
- Two children born in Mexico, two in USA
- She is a migrant farm worker in town for the season



Farm Worker Survivor's Case

- Her husband is a Permanent Resident-he refuses to apply for her
- Husband was arrested last night for domestic violence
- What do you do? Referrals? Rights?



The Farm Worker Culture

- Seasonal, sporadic underemployment
- Sub-standard housing
- No medical benefits
- Children higher risk for abuse/
neglect, developmental delay, etc.
- Some of the lowest wages



Farm Worker Culture

- No retirement benefits
- Hard, physical manual labor
- Higher health risk/early mortality

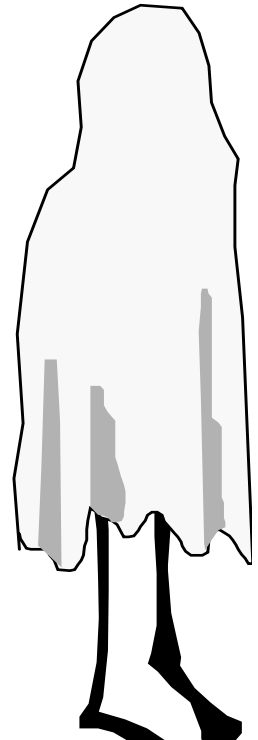


Farm Worker Culture

- Family separation issues
- Success dependent on weather and market
- Higher alcohol/drug use/abuse

Migrant Sub-Culture

- Prior issues of farm workers, plus:
- Nomadic lifestyle
- Loss of school days for children
- Family separation issues
- Families vs single men
vs families



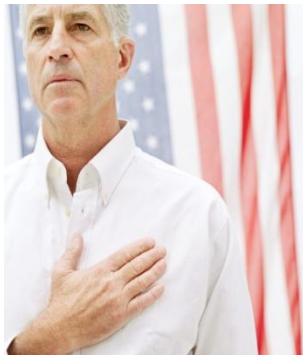


Migrant Sub-Culture

- More vulnerable for human trafficking
- Move to 'follow/harvest' crops
- Major north/south routes
- Other routes

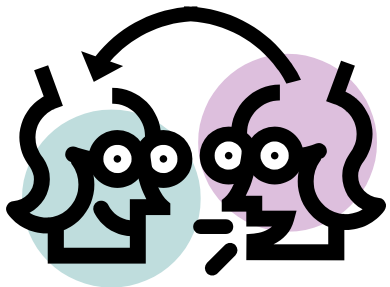
Factors that Influence Acculturation

- Physical characteristics
- Similar cultural values
- Mentors



Factors that influence acculturation

- Language skills
- Employable skills/Education
- Problem Solving Skills





Immigrant Influence

A Historical Review of Farm Workers in USA:

- Indenture servant, mid-1600's
- African slaves, 1619-1863
- 1848 Chinese arrive in SF: 1865 in Hawaii



Immigrant influence

- 1850-1880 Mexican workers come to California
- 1920-1960 Bracero Program
- 1987 Immigration Reform & Control Act

Legal Remedies for Victims

1. VAWA Self-petition

DV victim (physical, emotional, sexual)

Married to USC or LR

2. U-Visa

Victim of crime, i. e. DV Battery

Called 911 (must have police report)

Willing to testify against abuser



Federal vs. State Laws

Some States/Cities/Counties have passed laws against immigrants

- Police are 'ICE' agents
- Housing is limited
- Other examples

Only Congress in Washington can change our current immigration laws



Agencies Barriers to Domestic Violence Services

- Documentation requirements
- Bi-lingual/bi-cultural staff
- Location
- Limited resources
- Institutional environment
- Office hours 9 to 5, Monday-Friday



Barriers to Domestic Violence Services

- Fear of law enforcement, border patrol, abuser, family, etc.)
- Rights unknown
- Local DV resources unknown
- Lack of transportation
- No English, illiterate
- Prior history of distrust



Shattering Barriers for Agencies

- Hire & train appropriate staff
- Central/accessible location
- Friendly, inviting office space
- Open to all victims
- Flexible hours
- Maintain collaboration with
other community agencies



Thinking outside the Box

○ Need to know

- Educational Activities for fun
- Public transportation-your last bus ride?
- Free is GOOD! Library, parks, concerts
- Understand their ways/culture

○ Culture influence

○ Their children



Farm Worker Educational Video



Linguistic & Cultural Grant

In 2009, The Shelter received funding through FCADV from DCF for an enhanced delivery system of services. This initiative focuses on enhancing the community partnerships using the *Safe and Together* model. The overarching goals are to:

- Reduce the number of children removed from rural migrant farm worker survivors of domestic violence involved in child abuse investigations by establishing and enhancing partnerships between The Shelter for Abused Women & Children's Immokalee Outreach Office and the regional and local DCF child protection teams.
- Increase the competence of domestic violence advocates and child welfare workers who assist Immokalee farm worker survivors of domestic violence in the child welfare system.
- Increase and enhance domestic violence advocacy provided to rural and migrant farm worker survivors with children involved in open child abuse investigations.
- Increase awareness about domestic violence among Immokalee migrant farm workers.



Soy Mujer: Tengo Poder

- Local grant to host a 1 day conference for Hispanic women
- Provided breakfast and lunch
- Keynote speaker
- Workshops during day
- \$50 stipend for a day's work



Celebrations

- Birthdays-monthly
- Mother's Day-May 10th
- Independence Day
- Thanksgiving
- Christmas
- New Year's
- Others

Other Ideas?

- Share with your supervisor
- Share with co-workers
- Don't be afraid
- If you build it, they will come





Community Action Plan

- Identify agencies that serve same population
- Collaborate in joint projects
- Be available for weekend projects
- Use local media
- Keep trying!!!!!!

Bibliography

- Domestic Violence in Rural America, A FCADV manual, 2005
- Addressing Domestic Violence in a Clinical Setting. 1999 Migrant Clinicians Network Handbook, Austin, TX
- Domestic Violence in Rural America: A Resource Guide For Services Providers, 1999. The Rural Department of the Florida Coalition Against Domestic Violence, Tallahassee, FL.
- Guide for Domestic Violence & Sexual Assault Training for Farmworker Women, 1999. Lideres Campesinas Workbook. Pomona, CA

Bibliography, continued

- Thissen Carlene. (2002) Immokalee's Fields of Hope. Writer's Showcase, iUniverse, Inc. Lincoln, NE
- Wiggins, Earl. Florida Migrant Coordinator of Collier County Public Schools, Personal Interview October, 1997 and August, 2002
- Personal interview with more that 500 farm workers and immigrants who have been victims of domestic violence.
- Coalition of Immokalee Workers, Inc. interview with Lucas Benitez, a member

Some Web Sites to Explore:

- www.cmfnc.org/ Catholic Migrant Farmworker Network
- www.ciw-online.org/ciw Coalition of Immokalee Farm Workers
- www.fcadv.org Florida Coalition Against Domestic Violence
- www.naplesshelter.org The Shelter for Abused Women & Children

More Web Sites;

- www.fwjstic.org National Farm Workers Service Center
- www.migrantclinican.org Migrant Clinician Network
- www.nfwm.org National Farm Workers Ministry
- www.fiac.org Florida Immigration Advocacy Center



IMMOKALEE OUTREACH OFFICE

Lucy V. Ortiz, LCSW

The Shelter for Abused Women & Children

Immokalee Outreach Office

239.657.5700

lortiz@naplesshelter.org

rev.12.01.11